



Pump and Mixer Specialists

Location: **City of Anywhere**
 Date: **December 1, 2009**

Area:	General
Equipment:	Raw Sewage Pump 1

Repair Priority	Continue to Monitor
Fault Type	N/A

Diagnosis and Recommended Action

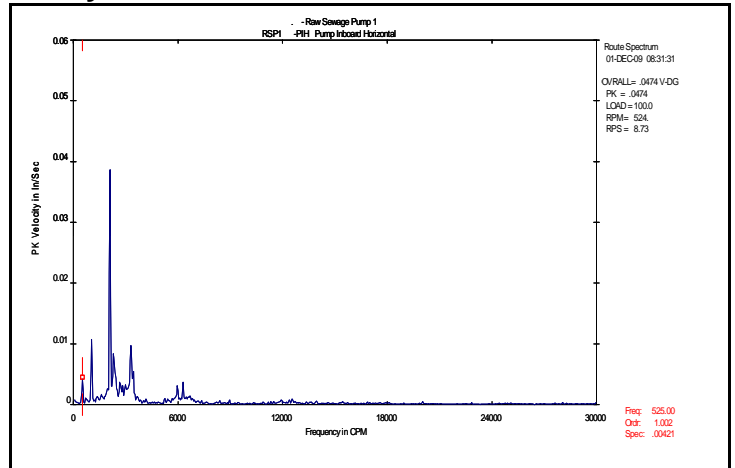
Vibration on this unit is low and acceptable.

Equipment Image



Raw Sewage Pump 1

Analysis Data



Vibration Spectrum

Comments

There are no mechanical faults on this equipment.

Inspection Data

Packing	OK
Packing Temp.	OK
Flush Plan	OK
Mach Guards	OK
Pressure	106 kpa

Measurement Detail

Parameters	Values
Vibration (ips)	0.05 ips
Vibration (g's)	0.5 g
Temperature	No issues
Operating Speed	524 rpm

Corrective Action Taken



Pump and Mixer Specialists

Location: **City of Anywhere**
 Date: **December 1, 2009**

Area:	General
Equipment:	Raw Sewage Pump 3

Repair Priority	Continue to Monitor
Fault Type	N/A

Diagnosis and Recommended Action

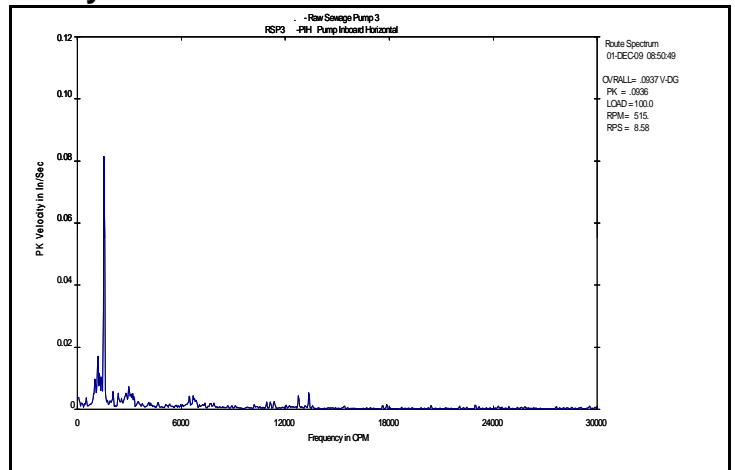
Vibration on this unit is low and acceptable.

Equipment Image



Raw Sewage Pump 3

Analysis Data



Vibration Spectrum

Comments

There are no mechanical faults on this equipment.

Inspection Data

Packing	OK
Packing Temp.	OK
Flush Plan	OK
Mach Guards	OK
Pressure	100 kpa

Measurement Detail

Parameters	Values
Vibration (ips)	0.09 ips
Vibration (g's)	0.6 g
Temperature	No issues
Operating Speed	515 rpm

Corrective Action Taken



Pump and Mixer Specialists

Location: **City of Anywhere**
 Date: **December 1, 2009**

Area:	General
Equipment:	Raw Sewage Pump 4

Repair Priority	Continue to Monitor
Fault Type	N/A

Diagnosis and Recommended Action

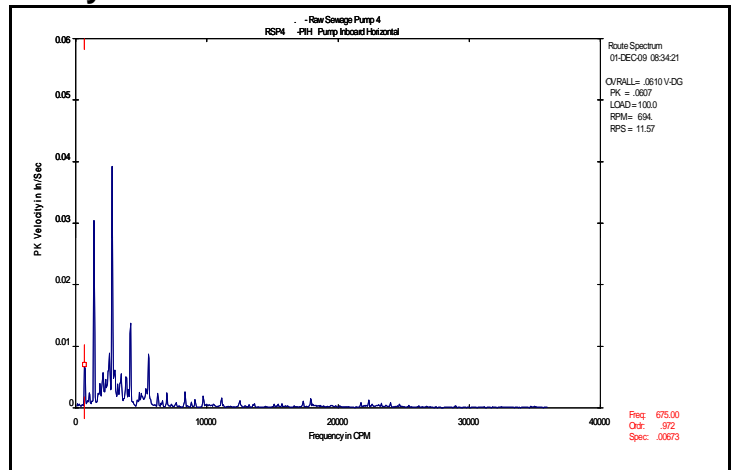
Vibration on this unit is low and acceptable.

Equipment Image



Raw Sewage Pump 4

Analysis Data



Vibration Spectrum

Comments

There are no mechanical faults on this equipment.

Inspection Data

Packing	OK
Packing Temp.	OK
Flush Plan	OK
Mach Guards	OK
Pressure	112 kpa

Measurement Detail

Parameters	Values
Vibration (ips)	0.06 ips
Vibration (g's)	0.1 g
Temperature	No issues
Operating Speed	694 rpm

Corrective Action Taken



Pump and Mixer Specialists

Location: **City of Anywhere**
 Date: **December 1, 2009**

Area:	General
Equipment:	Raw Sewage Pump Diesel

Repair Priority	Developing Problem
Fault Type	Pump Bearing

Diagnosis and Recommended Action

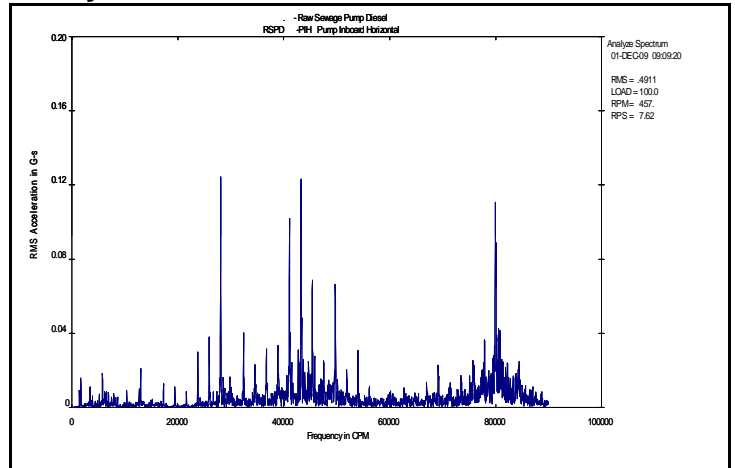
Vibration on this unit is quite low however the pattern on the pump indicates non-synchronous energy likely related to a dry bearing or early stage bearing fault. Please insure this pump's bearing are adequately lubricated prior to next visit.

Equipment Image



Raw Sewage Pump Diesel

Analysis Data



Vibration Spectrum

Comments

Inspection Data

Packing	OK
Packing Temp.	OK
Flush Plan	NA
Mach Guards	OK
Pressure	100 kpa

Measurement Detail

Parameters	Values
Vibration (ips)	0.08 ips
Vibration (g's)	0.7 g
Temperature	Not run long enough
Operating Speed	457 rpm

Corrective Action Taken